



TURLOCK POLICE DEPARTMENT

MONTHLY REPORT
AUGUST
STAFF UPDATE
SEPTEMBER 26, 2017



TPD Tip Line • 668-5550 ext. 6780 • TPDtipline@turlock.ca.us

DEPARTMENT STATISTICS:

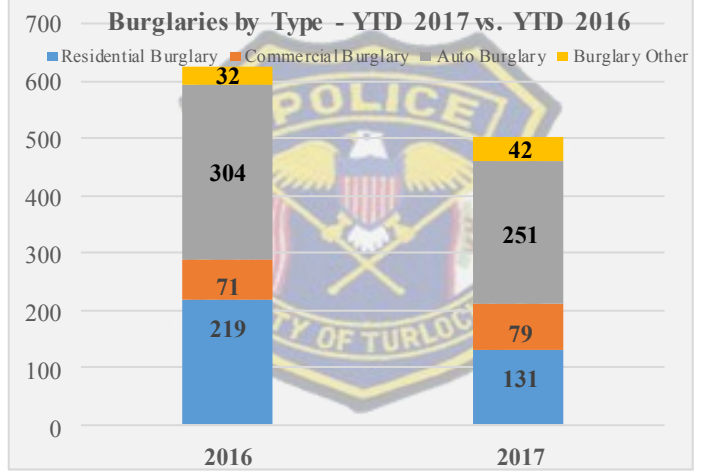
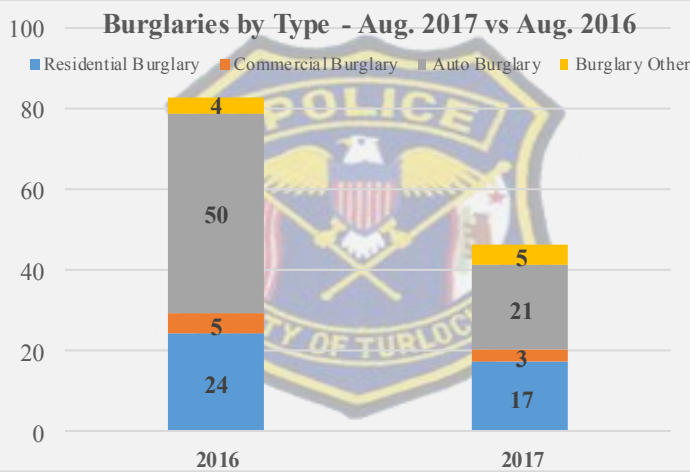
Current information as of 9/20/17

TOP 3 CALLS FOR SERVICE

| <u>Aug 2016:</u> | <u>Aug 2017:</u> | <u>% Chg.:</u> | <u>2016 YTD (Jan.-Aug.):</u> | <u>2017 YTD (Jan.-Aug.):</u> | <u>% Chg.:</u> |
|-------------------------|---------------------------|----------------|------------------------------|------------------------------|----------------|
| Suspicious Person (197) | Suspicious Person (207) | +5% | Suspicious Person (1,302) | Suspicious Person (1,419) | +9% |
| Disturbance—Other (172) | Disturbance—Verbal (149) | N/A | Suspicious Incident (954) | Disturbance—Verbal (1,155) | N/A |
| Security Check (139) | Suspicious Incident (109) | N/A | Disturbance—Other (1,150) | Disturbance—Other (930) | -19% |

BURGLARIES BY TYPE

| <u>Aug 2016:</u> | <u>Aug 2017:</u> | <u>% Chg.:</u> | <u>2016 YTD (Jan.-Aug.):</u> | <u>2017 YTD (Jan.-Aug.):</u> | <u>% Chg.:</u> |
|---------------------------|---------------------------|----------------|------------------------------|------------------------------|----------------|
| Auto Burglary (50) | Auto Burglary (21) | -58% | Auto Burglary (304) | Auto Burglary (251) | -17% |
| Residential Burglary (24) | Residential Burglary (17) | -29% | Residential Burglary (219) | Residential Burglary (131) | -40% |
| Commercial Burglary (5) | Commercial Burglary (3) | -40% | Commercial Burglary (71) | Commercial Burglary (79) | +11% |
| Burglary—Other (4) | Burglary—Other (5) | +25% | Burglary—Other (32) | Burglary—Other (42) | +31% |



ARRESTS

August 2016: 367

August 2017: 387

% Chg.: +5%

**Pending 0 Reports for Entry*

RESPONSE TIMES

| | August | | YTD (Jan.-Aug.) | | % Chg. in YTD | |
|------------|--------------|--------------|-----------------|---------------|------------------------|------------------------|
| | <u>2016:</u> | <u>2017:</u> | <u>2016:</u> | <u>2017:</u> | <u>Calls Received:</u> | <u>Response Time :</u> |
| Priority 1 | 72 07:24 | 69 08:04 | 459 07:07 | 553 07:15 | +21% | +2% |
| Priority 2 | 212 13:17 | 258 13:41 | 1,872 13:41 | 1,954 13:37 | +4% | -0.5% |
| Priority 3 | 1,655 40:49 | 1,673 39:01 | 12,569 39:30 | 12,884 42:40 | +3% | +8% |
| Priority 4 | 286 54:23 | 348 1:02:55 | 2,214 58:26 | 2,633 1:00:05 | +19% | +3% |

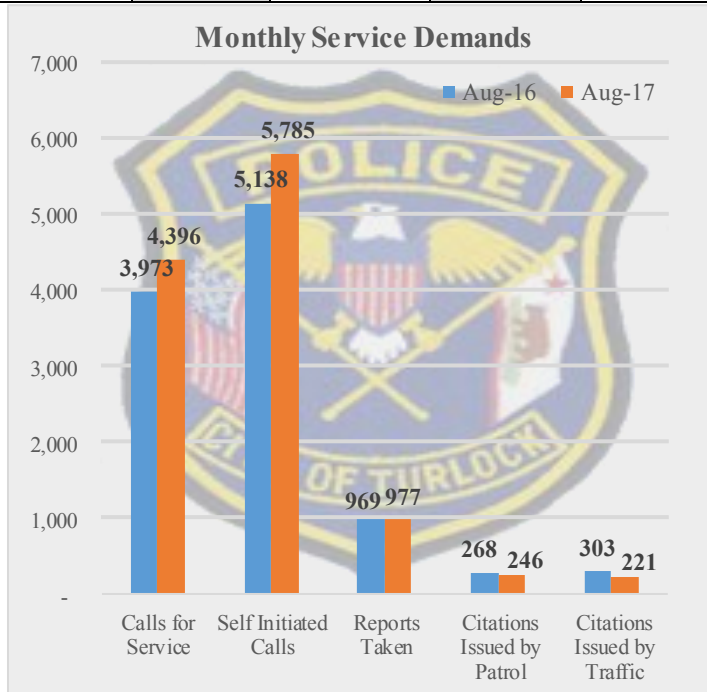
TOP 3 CALLS FOR SERVICE FOR PATROL BY VOTING DISTRICT—AUGUST 2017

| <u>District 1:</u> | <u>District 2:</u> | <u>District 3:</u> | <u>District 4:</u> |
|----------------------------|---------------------------|---------------------------|-------------------------------|
| 1. Suspicious Person (65) | 1. Suspicious Person (66) | 1. Suspicious Person (26) | 1. Suspicious Person (29) |
| 2. Disturbance Verbal (54) | 2. Trespassing (46) | 2. Investigation (24) | 2. Disturbance—Noise (27) |
| 3. Extra Patrol (48) | 3. Disturbance—Other (45) | 3. Disturbance—Noise (21) | 3. Suspicious Veh/Person (26) |

SERVICE DEMANDS:

Current information as of 9/21/17

| CALLS FOR SERVICE | | | | | SELF INITIATED | | | | |
|-------------------|-------|--------------------------|--------------------------|----------------|--------------------|-----------------------------|---|---|----------------|
| Aug. | | 2016 YTD (Jan.-Aug.): | 2017 YTD (Jan.-Aug.): | YTD % Chg.: | Aug. | | 2016 YTD (Jan.-Aug.): | 2017 YTD (Jan.-Aug.): | YTD % Chg.: |
| '16: | '17: | | | | '16: | '17: | | | |
| 3,973 | 4,396 | 30,179 | 32,610 | +8% | 5,138 | 5,785 | 36,835 | 39,521 | +7% |
| REPORTS TAKEN | | | | | CITATIONS ISSUED | | | | |
| Aug. | | 2016 YTD (Jan.-Aug.): | 2017 YTD (Jan.-Aug.): | YTD % Chg.: | Patrol Aug. '17 | Traffic Unit Aug. '17 | 2016 YTD Dept. Total (Jan.-Aug.): | 2017 YTD Dept. Total (Jan.-Aug.): | YTD % Chg.: |
| '16: | '17: | | | | | | | | |
| 969 | 977 | 7,288 | 7,590 | +4% | 246 | 221 | 3,494 | 2,583 | -26% |



SPECIAL DEPLOYMENT EFFORTS:

- Multiple units participated in a Regional Apprehension Team (RAT) Operation on August 18. The team consisted of TNET, patrol, probation, parole and CORE officers. The team conducted compliance checks of probationers and parolees and located multiple wanted subjects.
 - 11 arrests; 9 booked in jail
 - Stolen property located
 - Identity theft investigation initiated
- School Traffic Safety—Additional efforts of traffic safety have been focused towards school zones since the first day of school on August 14 for pedestrians, motorists, parents and students.
 - CITE Team Operation, August 23—82 traffic stops, 31 pedestrian stops, 51 vehicle stops, 5 arrests, 54 citations, 1 vehicle towed

PROACTIVE PATROL EFFORTS:

- Animal Services visited 293 individual residences for proactive license enforcement.
- CORE officers focused on extra patrols throughout parks and downtown due to increased complaints about City ordinance issues.
- Animal Services hosted a Rabies Clinic on August 19 where over 30 dogs received rabies vaccinations and owners purchased dog licenses to clear outstanding violations.
- VIPS assisted the Post Office by placing postal service informational stickers on community mailboxes about what to do if the community mailbox was damaged and/or mail has been stolen.

PET OF THE MONTH (Aug. 2017):

#7-43—"Molly" is a 2 year old Terrier Mix

SOCIAL MEDIA EFFORTS:

Current information as of 9/22/17

- Turlock Police Department is now posting our 24 Hour Daily Supervisory Patrol Logs on our website and across all social media platforms to inform the public of daily patrol activities.
- Public education through our social media pages is helping the department communicate information to the public on a variety of topics including but not limited to:
 - Daily Patrol Log
 - Back to School Safety
 - Department Promotions
 - Swearing In Ceremonies
 - City Recruitments
 - PSF Open House Event
 - Rape Aggression Defense (RAD)
 - Citizens Academy
- Department social media pages statistics (*% shown reflects changes since 8/7/17*):
 - Facebook—9,869 likes (+107 likes)
 - Twitter—5,464 followers (+119 followers)
 - Instagram—1,221 followers (+164 followers)
 - YouTube—29 subscribers
 - NextDoor—4,909 total members (+170 new members / 14% of claimed households in Turlock)

PART ONE CRIMES:

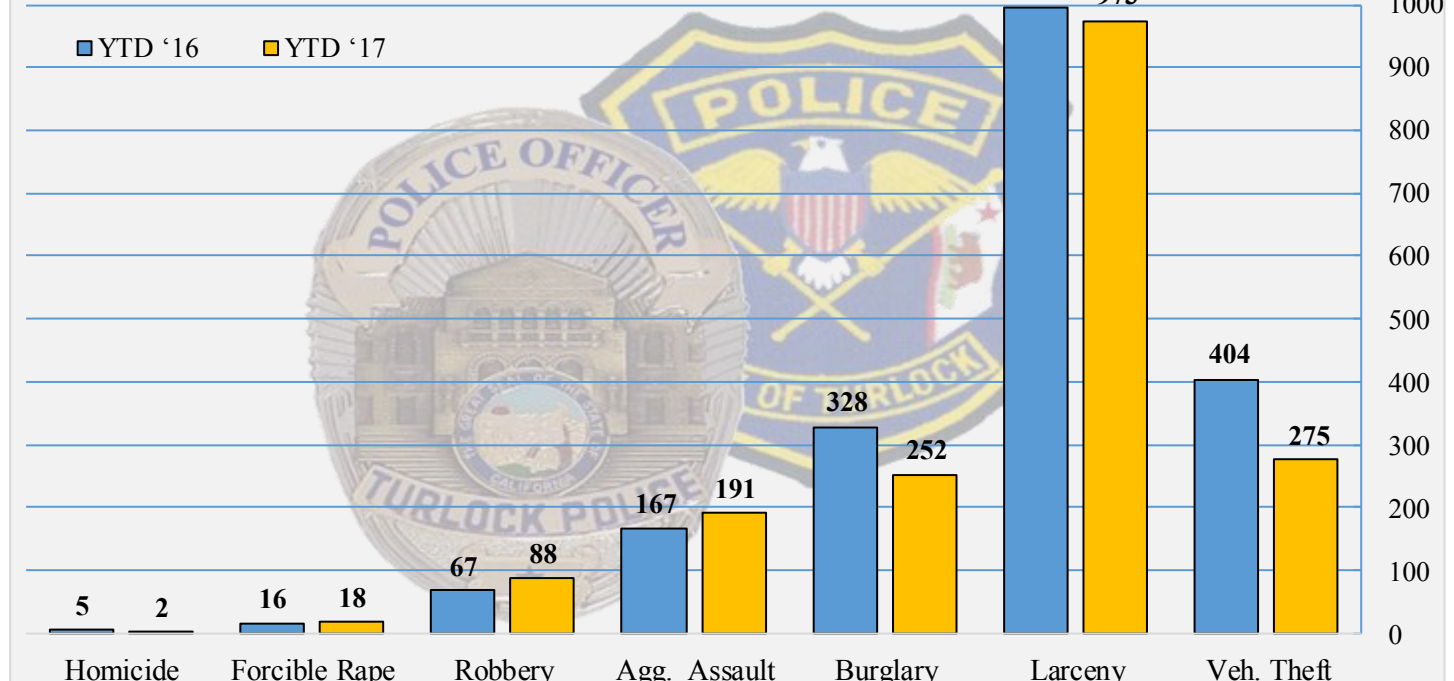
Current information as of 9/18/17

| | JAN | | FEB | | MAR | | APR | | MAY | | JUNE | | JULY | | AUG | | 2016 YTD Crime Rate | 2017 YTD Crime Rate | YTD 2016 | YTD 2017 | % Diff. '16 YTD vs '17 YTD | 5 Yr. YTD Avg. % Chg. |
|---------------|------------|------------|------------|------------|------------|------------|------------|------------|------------|------------|------------|------------|------------|------------|------------|------------|---------------------|---------------------|--------------|--------------|----------------------------|-----------------------|
| | '16 | '17 | '16 | '17 | '16 | '17 | '16 | '17 | '16 | '17 | '16 | '17 | '16 | '17 | | | | | | | | |
| Homicide | 0 | 0 | 0 | 1 | 1 | 0 | 1 | 0 | 1 | 0 | 2 | 1 | 0 | 0 | 0 | 0 | 5 | 0.03 | 5 | 2 | -60% | -29% |
| Forcible Rape | 2 | 4 | 1 | 1 | 0 | 0 | 2 | 4 | 2 | 5 | 6 | 2 | 3 | 2 | 0 | 0 | 16 | 0.25 | 16 | 18 | +13% | +45% |
| Robbery | 7 | 10 | 12 | 5 | 10 | 12 | 7 | 9 | 4 | 7 | 9 | 11 | 7 | 15 | 11 | 18 | 67 | 1.21 | 67 | 88 | +31% | +27% |
| Agg. Assault | 24 | 40 | 17 | 21 | 27 | 14 | 23 | 31 | 24 | 35 | 16 | 20 | 15 | 19 | 21 | 12 | 167 | 2.62 | 167 | 191 | +14% | +7% |
| Burglary | 62 | 56 | 52 | 32 | 40 | 31 | 43 | 33 | 35 | 19 | 36 | 23 | 27 | 33 | 33 | 25 | 327 | 3.46 | 328 | 252 | -23% | -35% |
| Larceny | 146 | 105 | 138 | 132 | 142 | 137 | 109 | 100 | 113 | 112 | 111 | 127 | 115 | 151 | 122 | 115 | 1,001 | 13.42 | 1,001 | 978 | -2% | -4% |
| Veh. Theft | 75 | 44 | 59 | 38 | 45 | 32 | 39 | 39 | 46 | 51 | 45 | 18 | 50 | 19 | 45 | 34 | 404 | 3.77 | 404 | 275 | -32% | -11% |
| TOTAL | 316 | 259 | 279 | 230 | 265 | 226 | 224 | 216 | 225 | 229 | 225 | 202 | 217 | 239 | 232 | 204 | 1,987 | 24.75 | 1,988 | 1,804 | -9% | -9% |

TOP 3 PART ONE CRIMES

| Aug. 2016: | Aug. 2017: | % Chg.: | 2016 YTD (Jan.-Aug.): | 2017 YTD (Jan.-Aug.): | % Chg.: |
|---------------------|---------------------|---------|-----------------------|-----------------------|---------|
| Larceny—Theft (122) | Larceny—Theft (115) | -6% | Larceny—Theft (1,001) | Larceny—Theft (978) | -2% |
| Auto Theft (45) | Auto Theft (34) | -24% | Auto Theft (404) | Auto Theft (275) | -32% |
| Burglary (33) | Burglary (25) | -24% | Burglary (327) | Burglary (252) | -23% |

Part One Crimes YTD 2016 vs YTD 2017



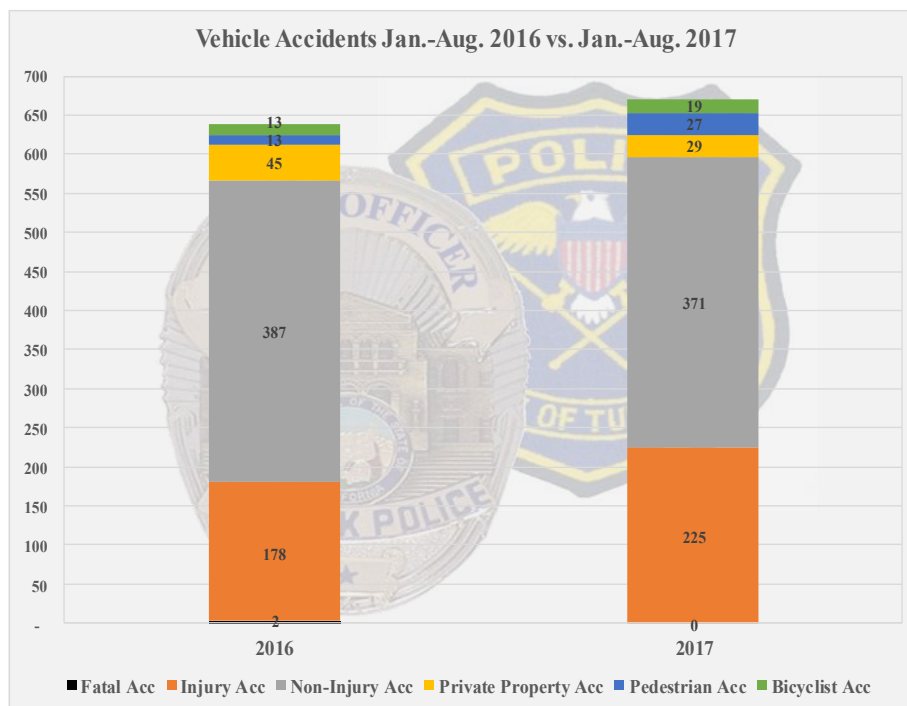
CRIME PREVENTION EFFORTS:

- National Night Out - August 1, 2017
 - Estimated Participation: 2,180
 - 35 Registered Block Parties
 - Donations Received: \$3,280 (+56% from 2016 total of \$2,097)
- Preparation for the 2017 Citizen's Academy—This is a 9 week course the meets every Thursday where citizens get to learn about operations within the police department and community policing strategies. Course began Sept 21. 19 citizens enrolled.
- Contacted Neighborhood Watch Captains to encourage them re-engage neighborhoods in their Neighborhood Watch programs. Future meetings have been scheduled.
- Coordinated up-coming Rape Aggression Defense (RAD) Course—2 day course, Sept. 30 and Oct 7. 26 enrolled, 25 on wait list. This course is offered twice a year.

TRAFFIC ACCIDENTS:

| | Population | Staff Level | Officers per Capita | Pedestrian Accidents | Bicyclist Accidents | Fatal Accidents | Injury Accidents | Non-Injury Accidents | Private Prop. Accidents | TOTAL ACC |
|------------------|------------|-------------|---------------------|----------------------|---------------------|-----------------|------------------|----------------------|-------------------------|------------|
| Aug. 2016 | 72,050 | 78 | 1.08 | 2 | 4 | 1 | 21 | 54 | 5 | 81 |
| Aug. 2017 | 72,879 | 78 | 1.07 | 2 | 2 | 0 | 25 | 55 | 2 | 82 |
| % Chg. | +1.2% | - | -0.9% | - | -50% | -100% | +19% | +2% | -60% | +1% |

| | Population | Staff Level | Officers per Capita | Pedestrian Accidents | Bicyclist Accidents | Fatal Accidents | Injury Accidents | Non-Injury Accidents | Private Prop. Accidents | TOTAL ACC |
|-----------------------------|------------|-------------|---------------------|----------------------|---------------------|-----------------|------------------|----------------------|-------------------------|------------|
| 2016 YTD (Jan.-Aug.) | 72,050 | 78 | 1.08 | 13 | 13 | 2 | 178 | 387 | 45 | 612 |
| 2017 YTD (Jan.-Aug.) | 72,879 | 78 | 1.07 | 27 | 19 | 0 | 225 | 371 | 29 | 661 |
| % Chg. | +1.2% | - | -0.9% | +107% | +46% | -100% | +26% | -4% | -36% | +8% |



PRIMARY TRAFFIC COLLISION FACTORS

| Aug. 2016: | Aug. 2017: |
|---|---|
| Unsafe Lane Change (13) Driving Under the Influence (10) Speeding (7) | Unsafe Lane Change (9) Failure to Yield from Stop Sign (8) Speeding (8) |