



TURLOCK POLICE DEPARTMENT

**MONTHLY REPORT  
FEBRUARY  
STAFF UPDATE**

PRESENTED TO COUNCIL: MARCH 27, 2018

TPD Tip Line • 668-5550 ext. 6780 • TPDtipline@turlock.ca.us



**DEPARTMENT STATISTICS:**

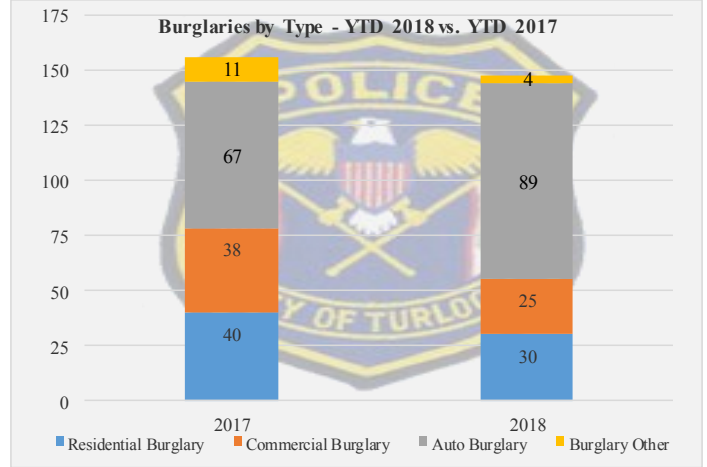
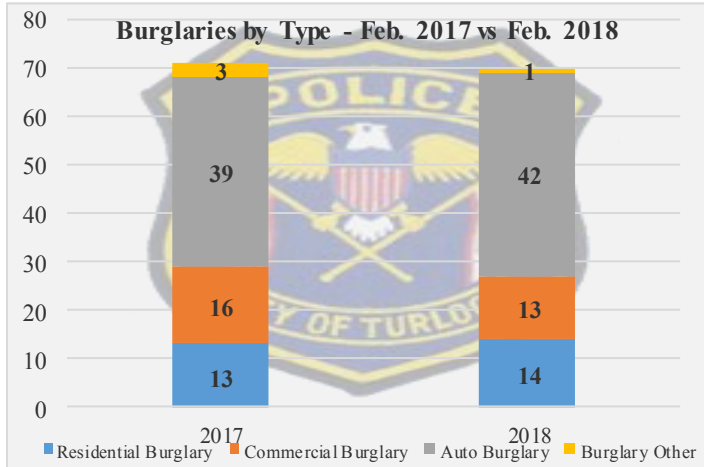
Current information as of 3/19/18

**TOP 3 CALLS FOR SERVICE**

<u>Feb. 2017:</u>	<u>Feb. 2018:</u>	<u>% Chg.:</u>	<u>2017 YTD (Jan.-Feb.):</u>	<u>2018 YTD (Jan.-Feb.):</u>	<u>% Chg.:</u>
Suspicious Person (156)	Suspicious Person (149)	-5%	Suspicious Person (315)	Suspicious Person (318)	+1%
Disturbance—Verbal (126)	Disturbance—Verbal (115)	-9%	Disturbance—Other (246)	Investigation / Code 6 (215)	N/A
Disturbance—Other (120)	Investigation / Code 6 (114)	N/A	Disturbance—Verbal (220)	Disturbance—Verbal (244)	+11%

**BURGLARIES BY TYPE**

	<u>Feb. 2017:</u>	<u>Feb. 2018:</u>	<u>% Chg.:</u>	<u>2017 YTD (Jan.-Feb.):</u>	<u>2018 YTD (Jan.-Feb.):</u>	<u>% Chg.:</u>
<b>Auto Burg.</b>	39	42	+8%	67	89	+33%
<b>Residential Burg.</b>	13	14	+8%	40	30	-25%
<b>Comm. Burg.</b>	16	13	-19%	38	25	-34%
<b>Burg.-Other</b>	3	1	-67%	11	4	-64%



**ARRESTS**

<b>Feb. 2017:</b> 719	<b>Feb. 2018:</b> 647	<b>% Chg.:</b> -10%
-----------------------	-----------------------	---------------------

**RESPONSE TIMES**

	<b>February</b>				<b>YTD (Jan.-Feb.)</b>				<b>% Chg. in YTD</b>	
	<u>2017:</u>		<u>2018:</u>		<u>2017:</u>		<u>2018:</u>		<b>Calls Rec'd:</b>	<b>Response Time:</b>
Priority 1	62	07:45	58	06:03	141	07:16	119	06:09	-16%	-15%
Priority 2	207	11:45	207	10:30	411	11:31	433	11:12	+5%	-3%
Priority 3	1,476	37:12	1,319	41:15	2,937	37:44	2,851	38:02	-3%	+1%
Priority 4	263	56:40	235	55:16	517	56:13	485	54:10	-6%	-4%

**TOP 3 CALLS FOR SERVICE FOR PATROL BY VOTING DISTRICT—SEPTEMBER & OCTOBER 2017**

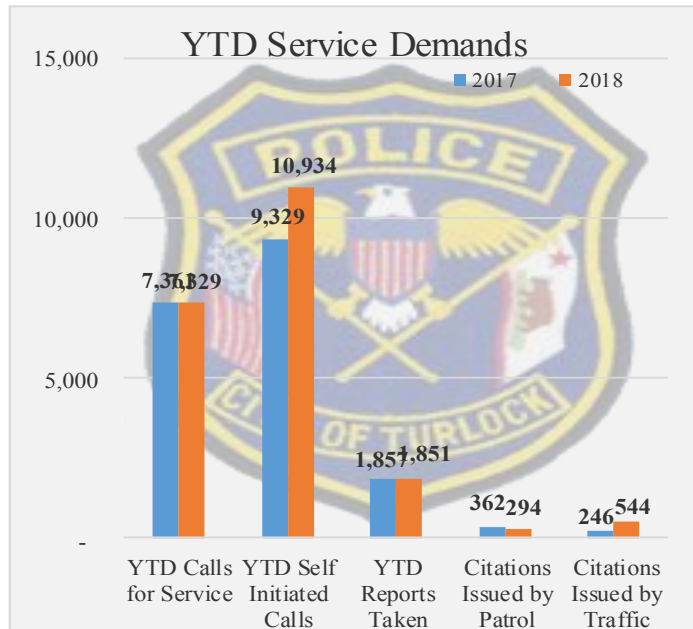
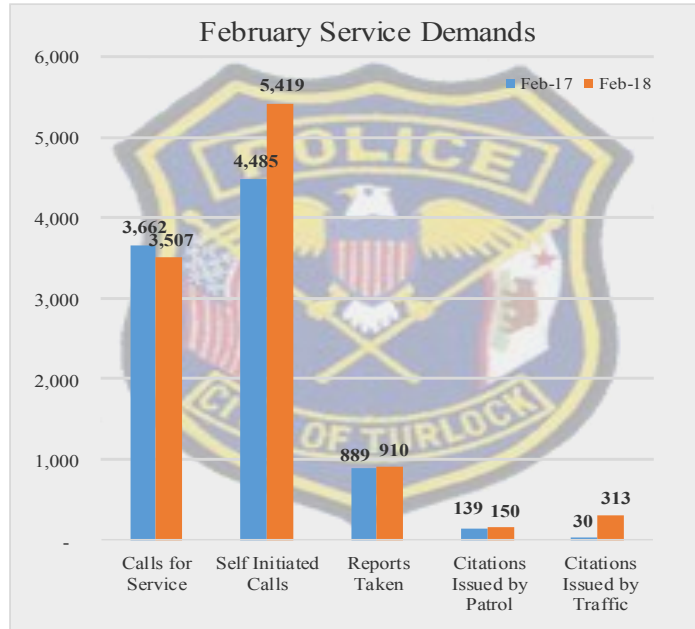
District 1:                      District 2:                      District 3:                      District 4:

Unable to complete as this component requires a manual count. No staff available to complete this at this time.

## SERVICE DEMANDS:

Current information as of 3/19/18

CALLS FOR SERVICE					SELF INITIATED				
Feb. '17:	Feb. '18:	2017 YTD (Jan.-Feb.):	2018 YTD (Jan.-Feb.):	YTD % Chg.:	Feb. '17:	Feb. '18:	2017 YTD (Jan.-Feb.):	2018 YTD (Jan.-Feb.):	YTD % Chg.:
3,662	3,507	7,361	7,329	-0.4%	4,485	5,419	9,329	10,934	+17%
REPORTS TAKEN					CITATIONS ISSUED				
Feb. '17:	Feb. '18:	2017 YTD (Jan.-Feb.):	2018 YTD (Jan.-Feb.):	YTD % Chg.:	Patrol Feb. '18	Traffic Unit Feb. '18	2016 YTD Dept. Total (Jan.-Feb.):	2017 YTD Dept. Total (Jan.-Feb.):	YTD % Chg.:
889	910	1,857	1,851	-0.3%	150	313	608	838	+38%



## SPECIAL DEPLOYMENT EFFORTS:

- On February 13, 2018, the Traffic Safety Unit participated in a CITE Operation in Turlock. Morning focus was on traffic safety laws around city schools during morning traffic and then later on throughout the city. A total of 115 citations were issued.
- On February 23, 2018, SIU in partnership with Probation, Parole and Patrol conducted a Regional Apprehension Team (RAT) operation. Compliance checks were conducted at 12 residences. Over 50 subjects were searched and 9 arrests were made.
- In February, 5 Downtown Overtime Extra Patrol shifts were worked. Officers are allowed to sign-up to work non-mandatatable overtime shifts to provide extra patrols specifically to downtown and city parks to address City Ordinance issues, illegal nuisance behaviors, and other criminal violations.
- Daily, the Traffic Safety Unit patrols school areas during morning and afternoon traffic for extra traffic enforcement to ensure the safety of students.
- Special Investigations Unit (SIU) assisted StanCATT with the surveillance of a stolen vehicle that was in Turlock's jurisdiction that resulted in 2 arrests and the recovery of the stolen vehicle.
- SIU served a search warrant at a residence in relation to a Butane Honey Oil (BHO) lab. The search concluded with 25 pounds of marijuana and the BHO lab equipment recovered.

## ANIMAL SERVICES & PET OF THE MONTH:

- February's promotion, "Stop the Loving Feeling," gave out \$50 vouchers for spay/neuter services. 52 vouchers were issued.
- During February, Animal Services Officers visited 160 residents for pet license enforcement.
- For Pet of the Month, see Animal Services presentation for more information.

## SOCIAL MEDIA EFFORTS:

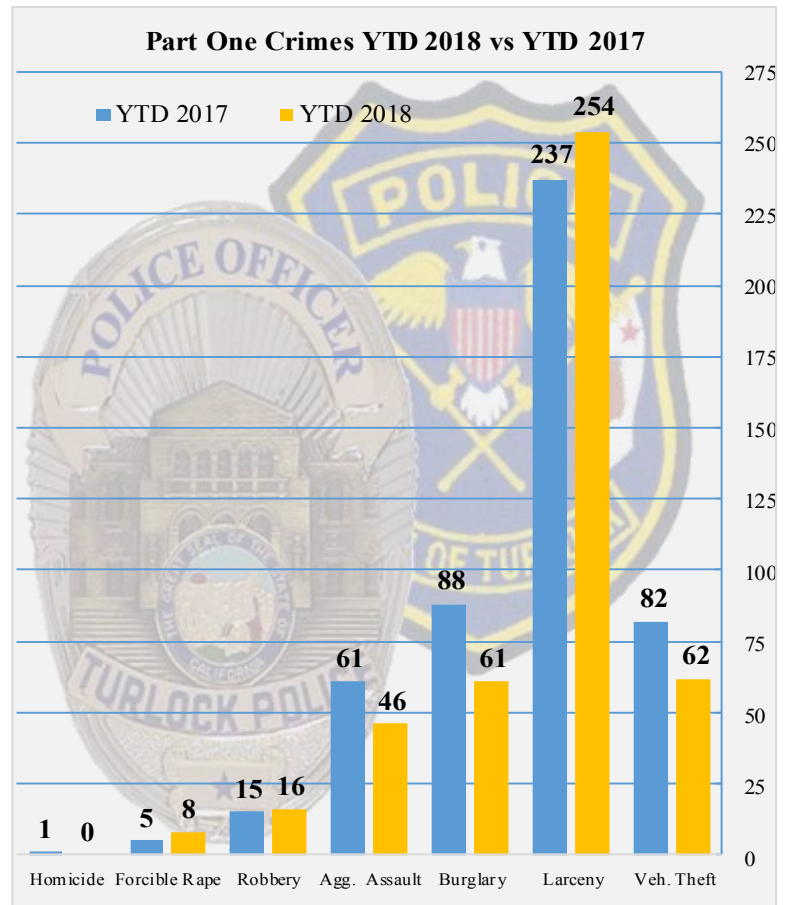
Current information as of 3/21/18

- Public education through our social media pages is helping the Department communicate information to the public on a variety of topics including but not limited to:
  - Daily posts of Supervisor Patrol Logs
  - Missing Persons
  - Press Releases
  - Police Department Recruitments
  - Traffic Safety Tips
  - City Recruitments
- Department social media pages statistics (*updated from January 2018 report*):
  - Facebook—10,738 (+355 likes)
  - Twitter—5,796 followers (+58 followers)
  - Instagram—1,917 followers (+110 followers)
  - YouTube—30 subscribers
  - NextDoor—5,396 total members (+60 new members / 4,375 claimed households in Turlock)

## PART ONE CRIMES:

Current information as of 3/20/18

2018	JAN	FEB	2018 YTD Crime Rate	YTD 2017	YTD 2018	YTD % Diff. '18 vs '17
Homicide	0	0	0.00	1	0	-100%
Forcible Rape	6	2	0.11	5	8	+60%
Robbery	5	11	0.22	15	16	+7%
Agg. Assault	21	25	0.63	61	46	-25%
Burglary	31	30	0.84	88	61	-31%
Larceny	126	128	3.49	237	254	+7%
Veh. Theft	42	20	0.85	82	62	-24%
<b>TOTAL</b>	<b>231</b>	<b>216</b>	<b>6.13</b>	<b>489</b>	<b>447</b>	<b>-9%</b>



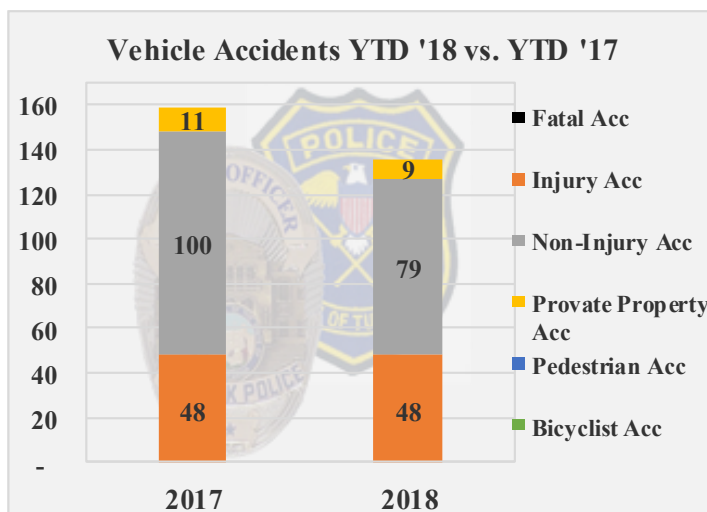
**UCR 5 YEAR AVERAGE**

2018	YTD 2018	5 YR AVG. (for Feb.)	% Diff. '18 vs 5 Yr Avg
Homicide	0	0.2	-100%
Forcible Rape	8	2.8	+186%
Robbery	16	15.8	+1%
Agg. Assault	46	46.2	0%
Burglary	61	96.2	-37%
Larceny	254	270.0	-6%
Veh. Theft	62	96.0	-35%
<b>TOTAL</b>	<b>447</b>	<b>527.2</b>	<b>-15%</b>

## TRAFFIC ACCIDENTS:

(\*Pending 0 Accident Reports)

	Population	Staff Level	Officers per Capita	Pedestrian Accidents	Bicyclist Accidents	Fatal Accidents	Injury Accidents	Non-Injury Accidents	Private Prop. Accidents	TOTAL ACC
Feb. 2017	72,796	78	1.07	2	2	0	24	39	5	<b>68</b>
Feb. 2018	72,796	78	1.07	2	0	0	29	37	5	<b>71</b>
% Chg.	-	-	-	0%	-100%	0%	+21%	-5%	0%	<b>+4%</b>
2017 YTD (Jan.-Feb.)	72,796	78	1.07	5	3	0	48	100	11	<b>159</b>
2018 YTD (Jan.-Feb.)	72,796	78	1.07	3	0	0	48	79	9	<b>136</b>
% Chg.	-	-	-	-40%	-100%	0%	0%	-21%	-18%	<b>-15%</b>



## PRIMARY TRAFFIC COLLISION FACTORS

Feb. 2017:	Feb. 2018:
Failure to Yield on Left Turn/U Turn on Green Light (4)	Red Light Violation (4)
Unsafe Lane Change (3)	Failure to Yield at Stop Sign (4)