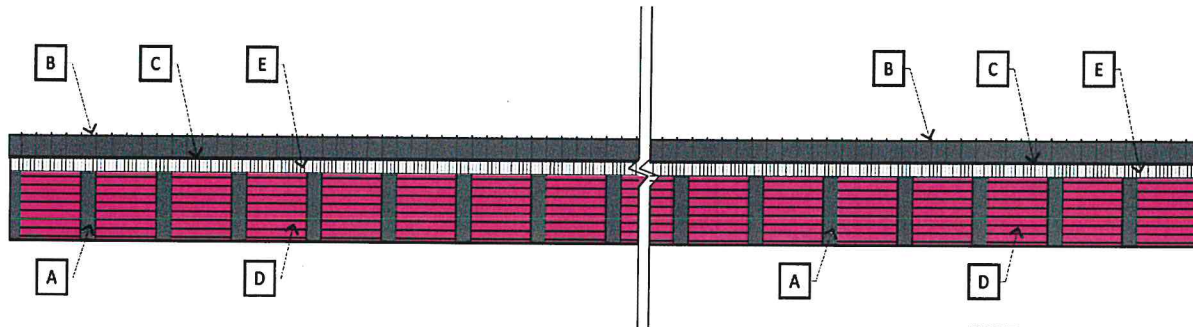


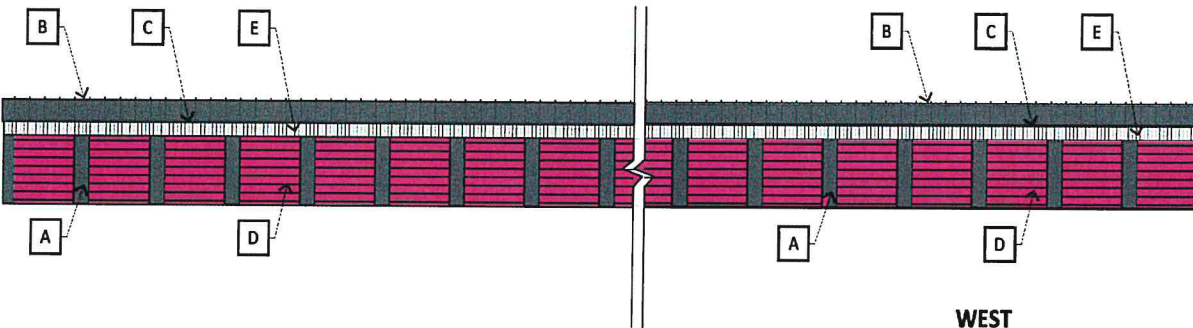
- 11'-6" TOP OF STEEL STUD FRAME AT ROOF PEAK
- 9'-6" TOP OF STEEL STUD FRAME AT FRONT WALL
- 8'-0" BOTTOM OF HEADER
- 0'-0" FINISH FLOOR ELEVATION



EAST
SCALE: 1/16" = 1'-0"

- 11'-6" TOP OF STEEL STUD FRAME AT ROOF PEAK
- 9'-6" TOP OF STEEL STUD FRAME AT FRONT WALL
- 8'-0" BOTTOM OF HEADER
- 0'-0" FINISH FLOOR ELEVATION

- 11'-6" TOP OF STEEL STUD FRAME AT ROOF PEAK
- 9'-6" TOP OF STEEL STUD FRAME AT FRONT WALL
- 8'-0" BOTTOM OF HEADER
- 0'-0" FINISH FLOOR ELEVATION



WEST
SCALE: 1/16" = 1'-0"

- 9'-6" TOP OF STEEL STUD FRAME AT FRONT WALL
- 8'-0" BOTTOM OF HEADER
- 0'-0" FINISH FLOOR ELEVATION

MATERIAL & COLOR DESIGNATORS

- A** MBCI SMOOTH PANEL, SIGNATURE 200 (SILICONIZED POLYESTER) "CHARCOAL GREY"
- B** MBCI "ULTRA-DEK" ROOF SYSTEM, SIGNATURE 300 (PVDF) "CHARCOAL GREY"
- C** MBCI "ULTRA-DEK" ROOF SYSTEM EAVE/GUTTER, SIGNATURE 200 (SILICONIZED POLYESTER) "CHARCOAL GRAY"
- D** DUNN EDWARDS (DE5048) "PINK PUNCH"
- E** MBCI PANEL, SIGNATURE 300 (PVDF) "POLAR WHITE"

COPYRIGHT 2022 SS DEVELOPMENTS, INC. ALL RIGHTS RESERVED. THIS DRAWING IS AN INSTRUMENT OF SERVICE. IT IS THE PROPERTY OF SS DEVELOPMENTS, INC. AND MAY NOT BE DUPLICATED, USED OR DISCLOSED WITHOUT WRITTEN PERMISSION FROM AN OFFICER OF SS DEVELOPMENTS INC.

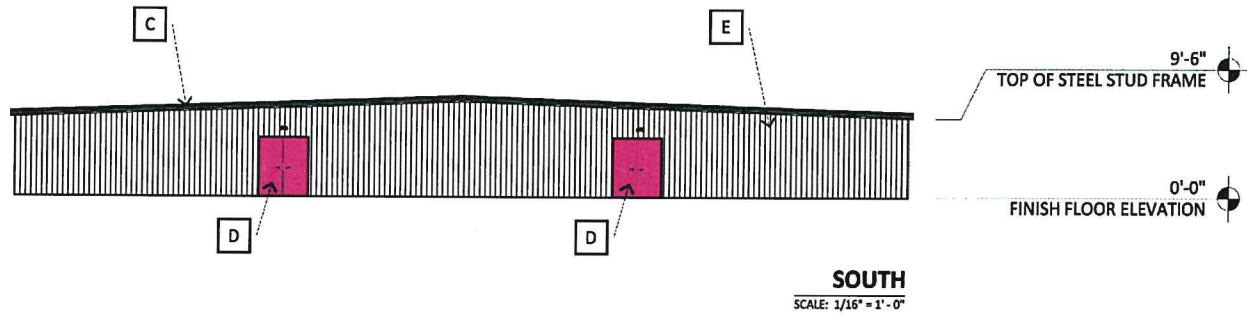
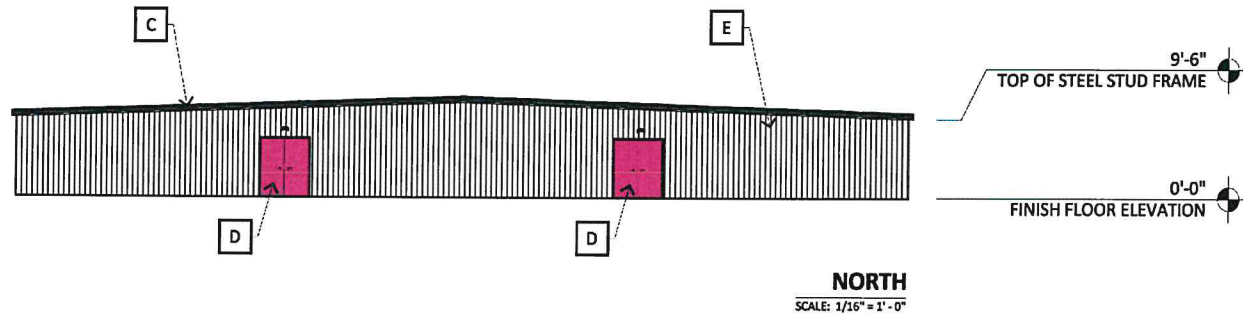
BUILDING E

PINK DOOR STORAGE - TURLOCK

1351 FULKERTH RD
TURLOCK, CA 95380

BECAUSE OF THE VARIATIONS AND LIMITATIONS OF COMPUTER SCREEN REPRESENTATION AND COLOR PRINTERS, THESE IMAGES ARE GENERAL REPRESENTATIONS ONLY. THE COLORS SHOWN ON THIS DOCUMENT MAY NOT REPRESENT THE EXACT COLOR OF THE FINISHED PRODUCT ONCE THE BUILDING IS COMPLETE.





MATERIAL & COLOR DESIGNATORS

- | | | | | | | | | | |
|----------|--|----------|--|----------|---|----------|------------------------------------|----------|--|
| A | MBCI SMOOTH PANEL, SIGNATURE 200 (SILICONIZED POLYESTER) "CHARCOAL GREY" | B | MBCI "ULTRA-DEK" ROOF SYSTEM, SIGNATURE 300 (PVDF) "CHARCOAL GREY" | C | MBCI "ULTRA-DEK" ROOF SYSTEM EAVE\GUTTER, SIGNATURE 200 (SILICONIZED POLYESTER) "CHARCOAL GRAY" | D | DUNN EDWARDS (DE5048) "PINK PUNCH" | E | MBCI PANEL, SIGNATURE 300 (PVDF) "POLAR WHITE" |
|----------|--|----------|--|----------|---|----------|------------------------------------|----------|--|

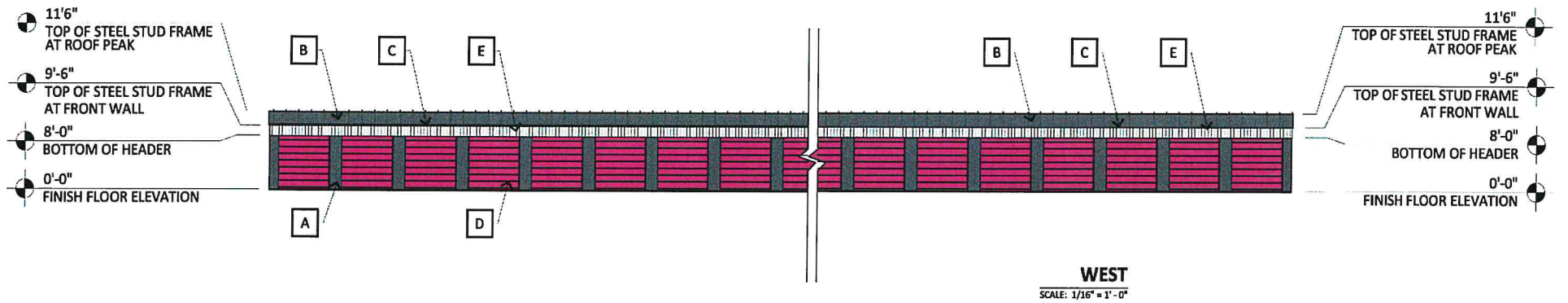
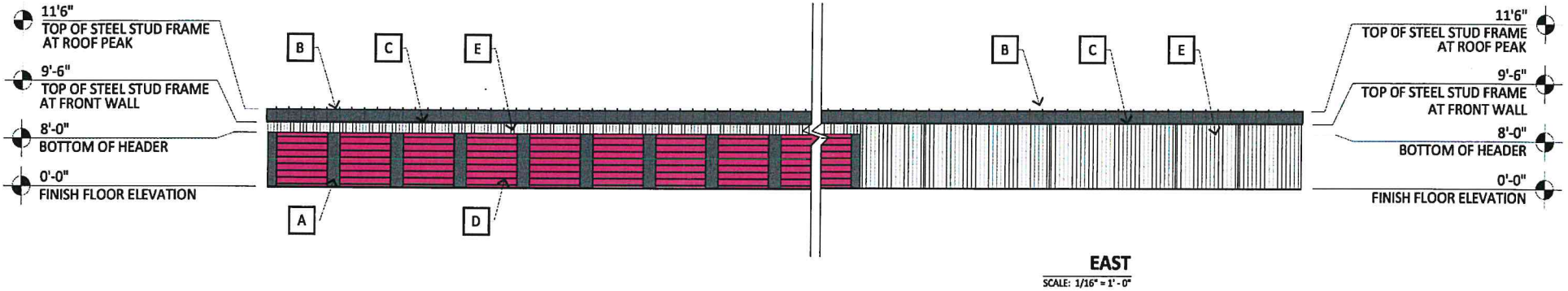
COPYRIGHT 2022 SS DEVELOPMENTS, INC. ALL RIGHTS RESERVED. THIS DRAWING IS AN INSTRUMENT OF SERVICE. IT IS THE PROPERTY OF SS DEVELOPMENTS, INC. AND MAY NOT BE DUPLICATED, USED OR DISCLOSED WITHOUT WRITTEN PERMISSION FROM AN OFFICER OF SS DEVELOPMENTS INC.

BUILDING E

PINK DOOR STORAGE - TURLOCK
1351 FULKERTH RD
TURLOCK, CA 95380

BECAUSE OF THE VARIATIONS AND LIMITATIONS OF COMPUTER SCREEN REPRESENTATION AND COLOR PRINTERS, THESE IMAGES ARE GENERAL REPRESENTATIONS ONLY. THE COLORS SHOWN ON THIS DOCUMENT MAY NOT REPRESENT THE EXACT COLOR OF THE FINISHED PRODUCT ONCE THE BUILDING IS COMPLETE.





MATERIAL & COLOR DESIGNATORS

- | | | | | |
|---|---|--|---|---|
| A MBCI SMOOTH PANEL, SIGNATURE 200 (SILICONIZED POLYESTER) "CHARCOAL GREY" | B MBCI "ULTRA-DEK" ROOF SYSTEM, SIGNATURE 300 (PVDF) "CHARCOAL GREY" | C MBCI "ULTRA-DEK" ROOF SYSTEM EAVE/GUTTER, SIGNATURE 200 (SILICONIZED POLYESTER) "CHARCOAL GRAY" | D DUNN EDWARDS (DE5048) "PINK PUNCH" | E MBCI "ULTRA-DEK" ROOF SYSTEM, SIGNATURE 300 (PVDF) "POLAR WHITE" |
|---|---|--|---|---|

COPYRIGHT 2022 SS DEVELOPMENTS, INC. ALL RIGHTS RESERVED. THIS DRAWING IS AN INSTRUMENT OF SERVICE. IT IS THE PROPERTY OF SS DEVELOPMENTS, INC. AND MAY NOT BE DUPLICATED, USED OR DISCLOSED WITHOUT WRITTEN PERMISSION FROM AN OFFICER OF SS DEVELOPMENTS INC.

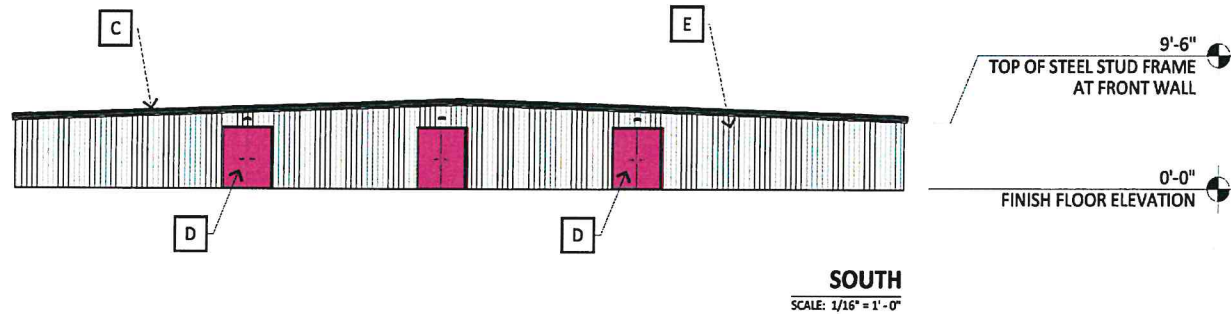
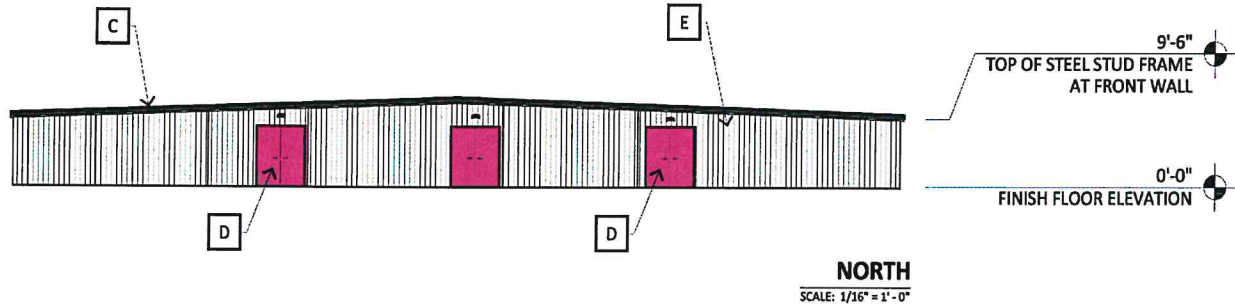
BUILDING F

PINK DOOR STORAGE - TURLOCK

1351 FULKERTH RD
TURLOCK, CA 95380

BECAUSE OF THE VARIATIONS AND LIMITATIONS OF COMPUTER SCREEN REPRESENTATION AND COLOR PRINTERS, THESE IMAGES ARE GENERAL REPRESENTATIONS ONLY. THE COLORS SHOWN ON THIS DOCUMENT MAY NOT REPRESENT THE EXACT COLOR OF THE FINISHED PRODUCT ONCE THE BUILDING IS COMPLETE.





MATERIAL & COLOR DESIGNATORS

- | | | | | |
|---|---|--|---|---|
| A MBCI SMOOTH PANEL, SIGNATURE 200 (SILICONIZED POLYESTER) "CHARCOAL GREY" | B MBCI "ULTRA-DEK" ROOF SYSTEM, SIGNATURE 300 (PVDF) "CHARCOAL GREY" | C MBCI "ULTRA-DEK" ROOF SYSTEM EAVE/GUTTER, SIGNATURE 200 (SILICONIZED POLYESTER) "CHARCOAL GRAY" | D DUNN EDWARDS (DE5048) "PINK PUNCH" | E MBCI "ULTRA-DEK" ROOF SYSTEM, SIGNATURE 300 (PVDF) "POLAR WHITE" |
|---|---|--|---|---|

COPYRIGHT 2022 SS DEVELOPMENTS, INC. ALL RIGHTS RESERVED. THIS DRAWING IS AN INSTRUMENT OF SERVICE. IT IS THE PROPERTY OF SS DEVELOPMENTS, INC. AND MAY NOT BE DUPLICATED, USED OR DISCLOSED WITHOUT WRITTEN PERMISSION FROM AN OFFICER OF SS DEVELOPMENTS INC.

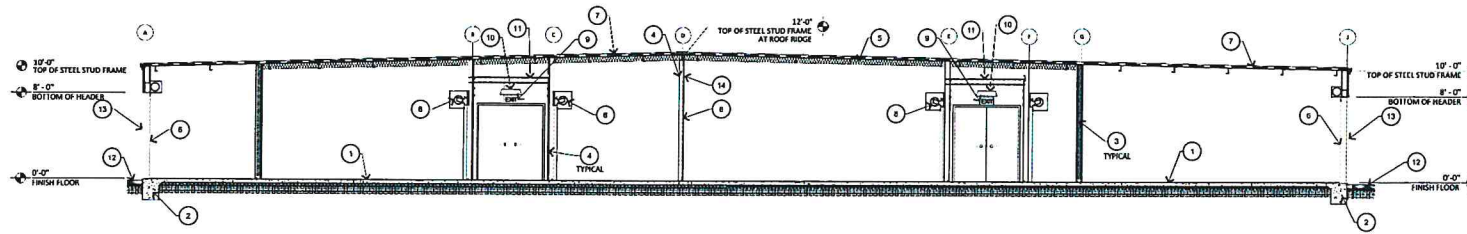
BUILDING F

PINK DOOR STORAGE - TURLOCK

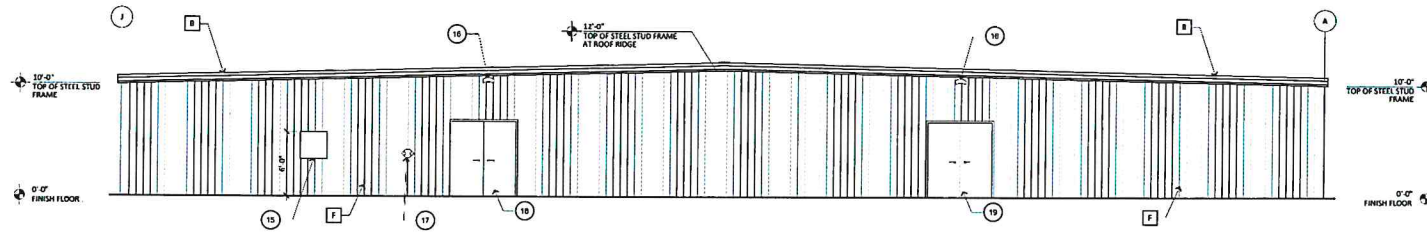
1351 FULKERTH RD
TURLOCK, CA 95380

BECAUSE OF THE VARIATIONS AND LIMITATIONS OF COMPUTER SCREEN REPRESENTATION AND COLOR PRINTERS, THESE IMAGES ARE GENERAL REPRESENTATIONS ONLY. THE COLORS SHOWN ON THIS DOCUMENT MAY NOT REPRESENT THE EXACT COLOR OF THE FINISHED PRODUCT ONCE THE BUILDING IS COMPLETE.

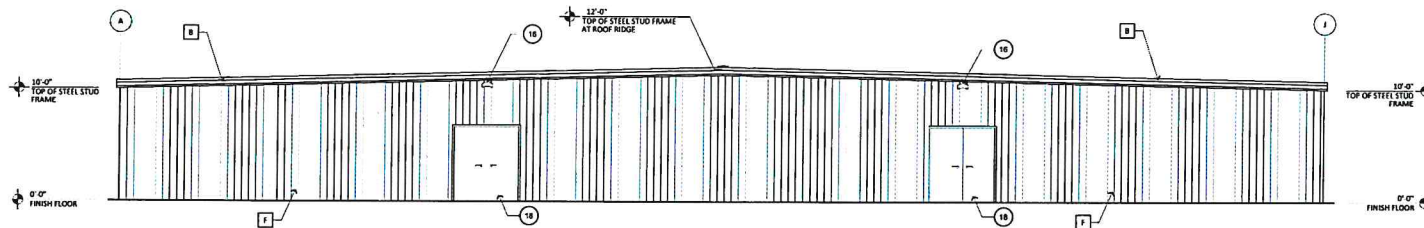




3 BUILDING SECTION
SCALE: 3/16" = 1'-0"



2 EXTERIOR ELEVATION - NORTH
SCALE: 3/16" = 1'-0"



1 EXTERIOR ELEVATION - SOUTH
SCALE: 3/16" = 1'-0"

KEY NOTES

1. CONCRETE SLAB, SEE STRUCTURAL DRAWINGS
2. CONCRETE FOUNDATION, SEE STRUCTURAL DRAWINGS
3. BATT INSULATION, SEE WALL SECTIONS
4. STORAGE UNIT INTERIOR WALL SHEATING, SEE SPECIFICATIONS
5. INSULATION WITH SOUM SHEET, TYPE R, CLASS A, PER ASTM C665. SHALL CONFORM TO FLAME SPREAD AND SMOKE GENERATION STANDARDS
6. STEEL STUD WALL, SEE FLOOR PLAN
7. STANDING SEAM STEEL ROOF SYSTEM SPANNING STRUCTURAL ROOF PURLINS, SEE STRUCTURAL DRAWINGS AND SPECIFICATIONS
8. ROLL-UP DOOR, SEE DOOR SCHEDULE
9. ILLUMINATED EXIT SIGN, SEE REFLECTED CEILING PLAN AND ELECTRICAL DRAWINGS
10. LIGHT FIXTURE, SEE REFLECTED CEILING PLAN AND ELECTRICAL DRAWINGS
11. STEEL STUD FRAME BRACE, SEE STRUCTURAL DRAWINGS
12. ASPHALT PAVING, SEE CIVIL DRAWINGS
13. STEEL SHEATHING OVER CORRUGATED MOISTURE BARRIER, OVER 6" STEEL STUD FRAME, SEE STRUCTURAL DRAWINGS FOR FRAME TYPE, SPACING AND ATTACHMENTS
14. SECURITY BARS ABOVE DOORS IN CORRIDORS, SEE DETAILS 1 & 2 J44.1
15. ELECTRICAL PANEL, SEE ELECTRICAL DRAWINGS
16. WALL MOUNTED LED LIGHT FIXTURE, MOUNTED AS HIGH AS POSSIBLE, SEE ELECTRICAL DRAWINGS
17. FIRE DEPARTMENT CONNECTION, EXACT HEIGHT CO-ORDINATED WITH FIRE MARSHALL
18. HOLLOW STEEL DOOR, SEE DOOR SCHEDULE

MATERIAL & COLOR DESIGNATORS

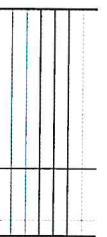
BASIS OF DESIGN:

- A** STANDING SEAM STEEL ROOF
MFG: MRC
FIN: "CHARCOAL GREY"
- B** STEEL FRAM
MFG: MRC
FIN: "CHARCOAL GREY"
- C** STEEL SIDING (SMOOTH)
MFG: MRC
MASTERLINE 16 "POLAR WHITE"
- D** OVERHEAD COILING DOOR (PAINTED)
MFG (PAINT): DUNN (FORWARDS)
COLOR: "PINK PINK"
- E** STEEL SIDING (SMOOTH)
MFG: MRC
MASTERLINE 16 "CHARCOAL GREY"
- F** STEEL SIDING
MFG: MRC
MASTERLINE 16 "POLAR WHITE"



CONTRACT 2022 SE
DEVELOPMENTS, LLC, ALL
RIGHTS RESERVED. THIS
DRAWING IS AN INSTRUMENT
OF SERVICE. IT IS THE
PROPERTY OF SD DEVELOPMENTS, LLC, AND MAY
BE REPRODUCED OR TRANSMITTED IN ANY FORM OR BY ANY MEANS, ELECTRONIC OR MECHANICAL, WITHOUT WRITTEN
PERMISSION OF SD DEVELOPMENTS, LLC.

PRELIMINARY
NOT FOR
CONSTRUCTION



PINK DOOR STORAGE
PHASE 3
1351 TUCKERTH ROAD TURLOCK, CA 95380
PHASE 3 MINOR DISCRETIONARY PERMIT SUBMITTAL 2022 NOVEMBER 01

BLDG E SECTION & EXTERIOR ELEVATIONS

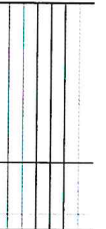
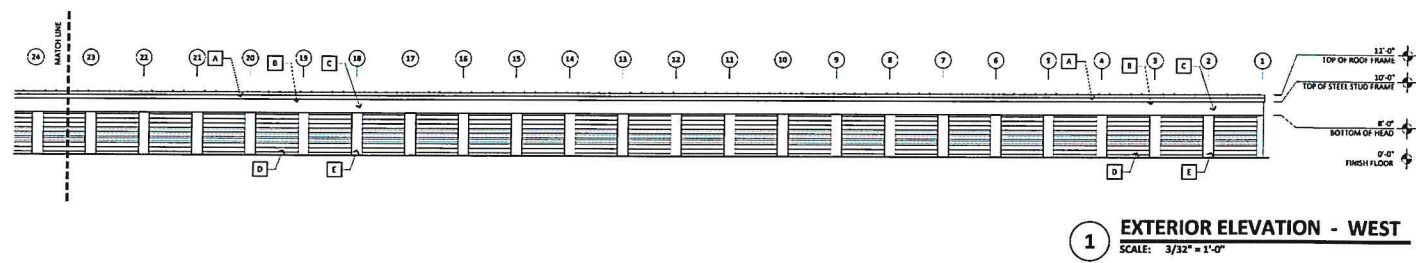
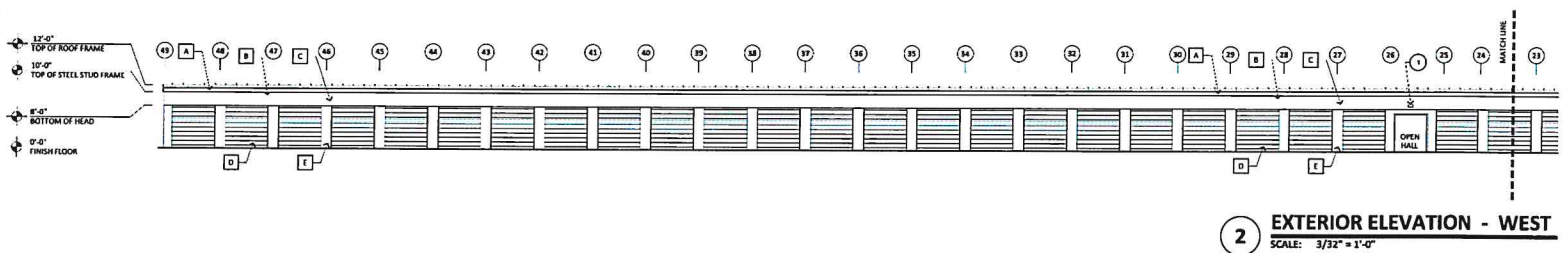
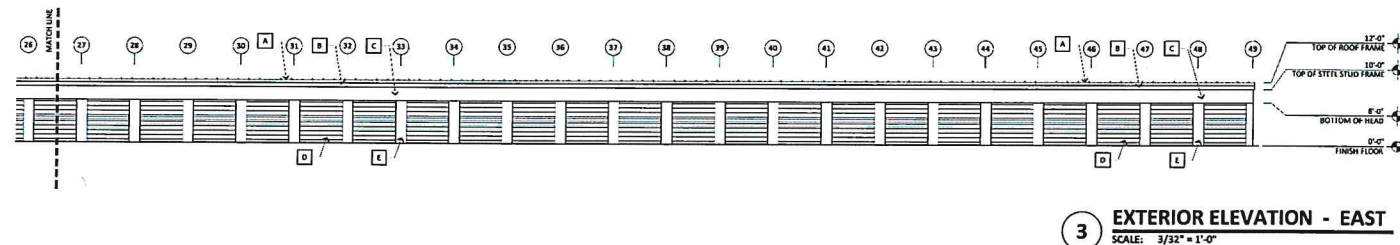
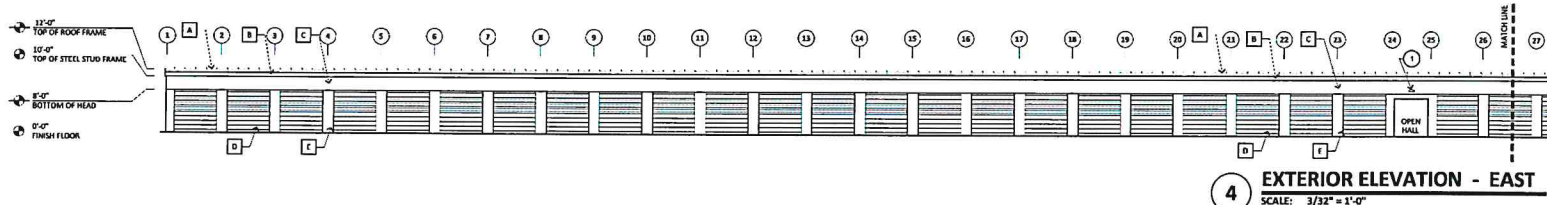
KEY NOTES

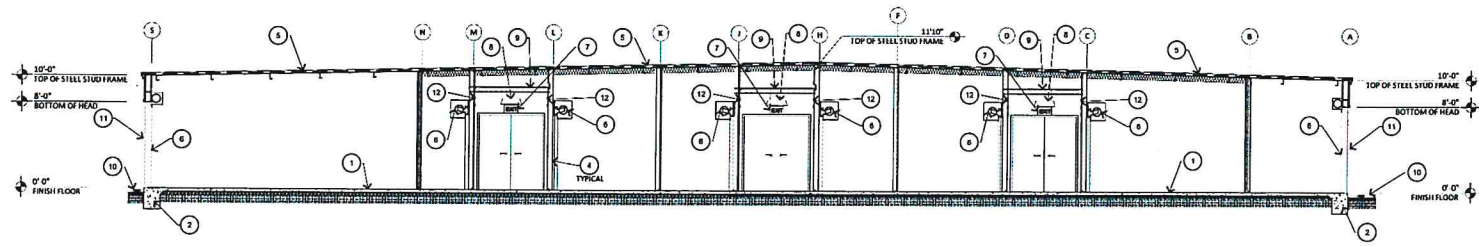
1. WALL MOUNTED LED LIGHT FIXTURE MOUNTED AS HIGH AS POSSIBLE, SEE ELECTRICAL DRAWINGS

MATERIAL & COLOR DESIGNATORS

BASIS OF DESIGN:

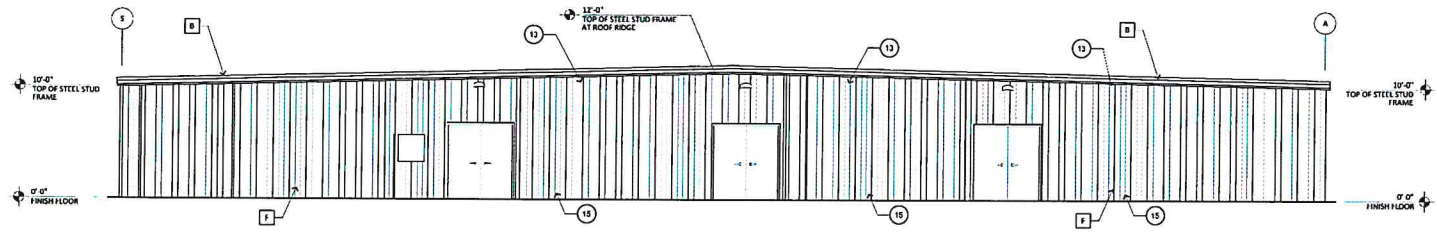
- A** STANDING SEAM STEEL ROOF
MFG: MRCI
PAU "CHARCOAL GREY"
- B** STEEL TRIM
MFG: MRCI
"CHARCOAL GREY"
- C** STEEL SIDING (SMOOTH)
MFG: MRCI
MASTERLINE 16 "POLAR WHITE"
- D** OVERHEAD COILING DOOR (PAINTED)
MFG (PAINT): DUNN EDWARDS
COLOR: "PINK PUNCH"
- E** STEEL SIDING (SMOOTH)
MFG: MRCI
MASTERLINE 16 "CHARCOAL GREY"
- F** STEEL SIDING
MFG: MRCI
MASTERLINE 16 "POLAR WHITE"



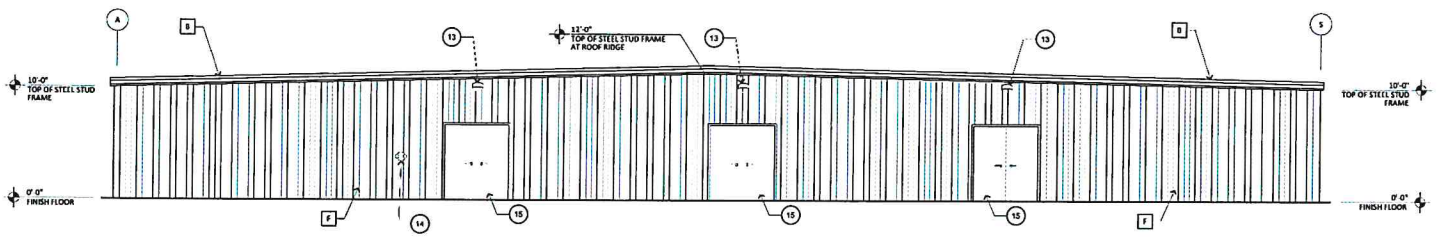


3 BUILDING SECTION
SCALE: 3/16" = 1'-0"

- KEY NOTES**
1. CONCRETE SLAB, SEE STRUCTURAL DRAWINGS
 2. CONCRETE FOUNDATION, SEE STRUCTURAL DRAWINGS
 3. STORAGE UNIT INTERIOR WALL SHEATING, SEE SPECIFICATIONS
 4. STEEL STUD WALL, SEE FLOOR PLAN
 5. STANDING SEAM STEEL ROOF SYSTEM SPANNING 31 STRUCTURAL ROOF PURLINS, SEE STRUCTURAL DRAWINGS AND SPECIFICATIONS
 6. ROLL-UP DOOR, SEE DOOR SCHEDULE
 7. ILLUMINATED EXIT SIGN, SEE REFLECTED CEILING PLAN AND ELECTRICAL DRAWINGS
 8. LIGHT FIXTURE, SEE REFLECTED CEILING PLAN AND ELECTRICAL DRAWINGS
 9. STEEL STUD FRAME BRACE, SEE STRUCTURAL DRAWINGS
 10. ASPHALT PAVING, SEE CIVIL DRAWINGS
 11. STEEL SHEATHING OVER CONTINUAL JOISTURE BARRIERS OVER 6" STEEL STUD FRAME, SEE STRUCTURAL DRAWINGS FOR FRAME TYPE, SPACING AND ATTACHMENTS
 12. SECURITY BARS ABOVE DOORS IN CORRIDORS, SEE DETAILS 1 & 2 /A.1
 13. WALL MOUNTED LED LIGHT FIXTURE, INDICATED AS HIGH AS POSSIBLE, SEE ELECTRICAL DRAWINGS
 14. FIRE DEPARTMENT CONNECTION, EXACT HEIGHT CO-ORDINATED WITH FIRE MARSHAL
 15. HOLLOW STEEL DOOR, SEE DOOR SCHEDULE



2 EXTERIOR ELEVATION - NORTH
SCALE: 3/16" = 1'-0"

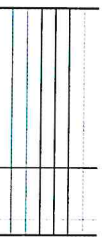


1 EXTERIOR ELEVATION - SOUTH
SCALE: 3/16" = 1'-0"

- MATERIAL & COLOR DESIGNATORS**
- BASIS OF DESIGN:**
- A STANDING SEAM STEEL ROOF
MFG: MRC
FIN: "CHARCOAL GREY"
 - B STEEL TRIM
MFG: MRC
FIN: "CHARCOAL GREY"
 - C STEEL SIDING (SMOOTH)
MFG: MRC
MASTERLINE 16 "POLAR WHITE"
 - D OVERHEAD COILING DOOR (PAINTED)
MFG (PAINT): OJUN (DOWNWARDS)
COLOR: "TINE PRINCE"
 - E STEEL SIDING (SMOOTH)
MFG: MRC
MASTERLINE 16 "CHARCOAL GREY"
 - F STEEL TRIM
MFG: MRC
MASTERLINE 16 "POLAR WHITE"



COPYRIGHT 2022 S&D DEVELOPMENTS, LLC. ALL RIGHTS RESERVED. THIS DRAWING IS AN INSTRUMENT OF SERVICE. IT IS THE PROPERTY OF S&D DEVELOPMENTS, LLC. AND MAY BE REPRODUCED OR TRANSMITTED IN ANY FORM OR BY ANY MEANS, WITHOUT WRITTEN PERMISSION OF S&D DEVELOPMENTS, LLC.



PINK DOOR STORAGE - BLDG F
PHASE 3
1351 FULBERTH ROAD TURLOCK, CA 95280
MINOR DISCRETIONARY PERMIT SUBMITTAL 2022 NOVEMBER 01

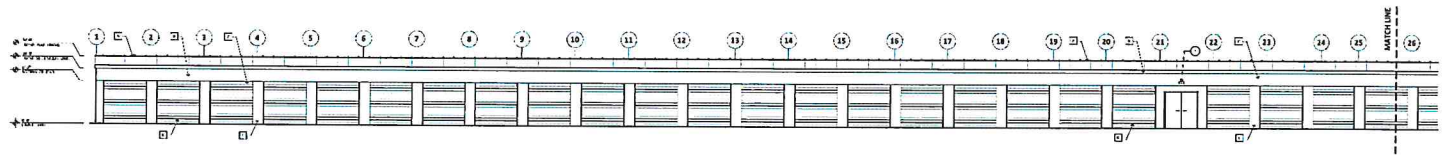
BLDG F SECTION & EXTERIOR ELEVATIONS

KEY NOTES

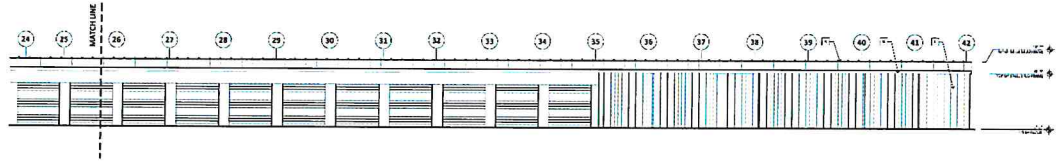
1. WALL MOUNTED LED LIGHT FIXTURE MOUNTED AS HIGH AS POSSIBLE, SEE ELECTRICAL DRAWINGS

MATERIAL & COLOR DESIGNATORS

- BASIS OF DESIGN:**
- A** STANDING SEAM STEEL ROOF
MFG: MGC
FIN: "CHARCOAL GRAY"
 - B** STEEL TRIM
MFG: MGC
FIN: "CHARCOAL GRAY"
 - C** STEEL SIDING (SMOOTH)
MFG: MGC
MASTERLINE 16 "POLAR WHITE"
 - D** OVERHEAD COILING DOOR (PAINTED)
MFG (PAINT) DUNN EDWARDS
COLOR: "TWIN PUNCH"
 - L** STEEL SIDING (SMOOTH)
MFG: MGC
MASTERLINE 16 "CHARCOAL GRAY"
 - P** STEEL SIDING
MFG: MGC
MASTERLINE 16 "POLAR WHITE"



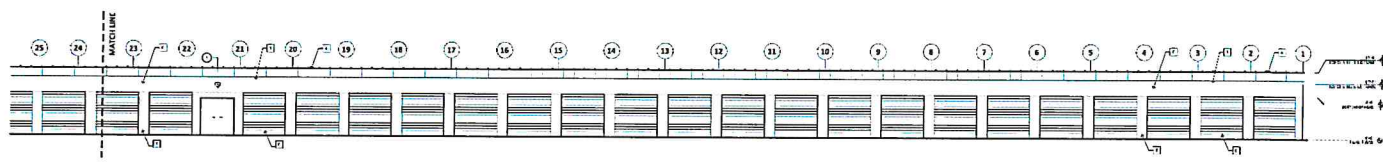
4 EXTERIOR ELEVATION - EAST
SCALE: 3/32" = 1'-0"



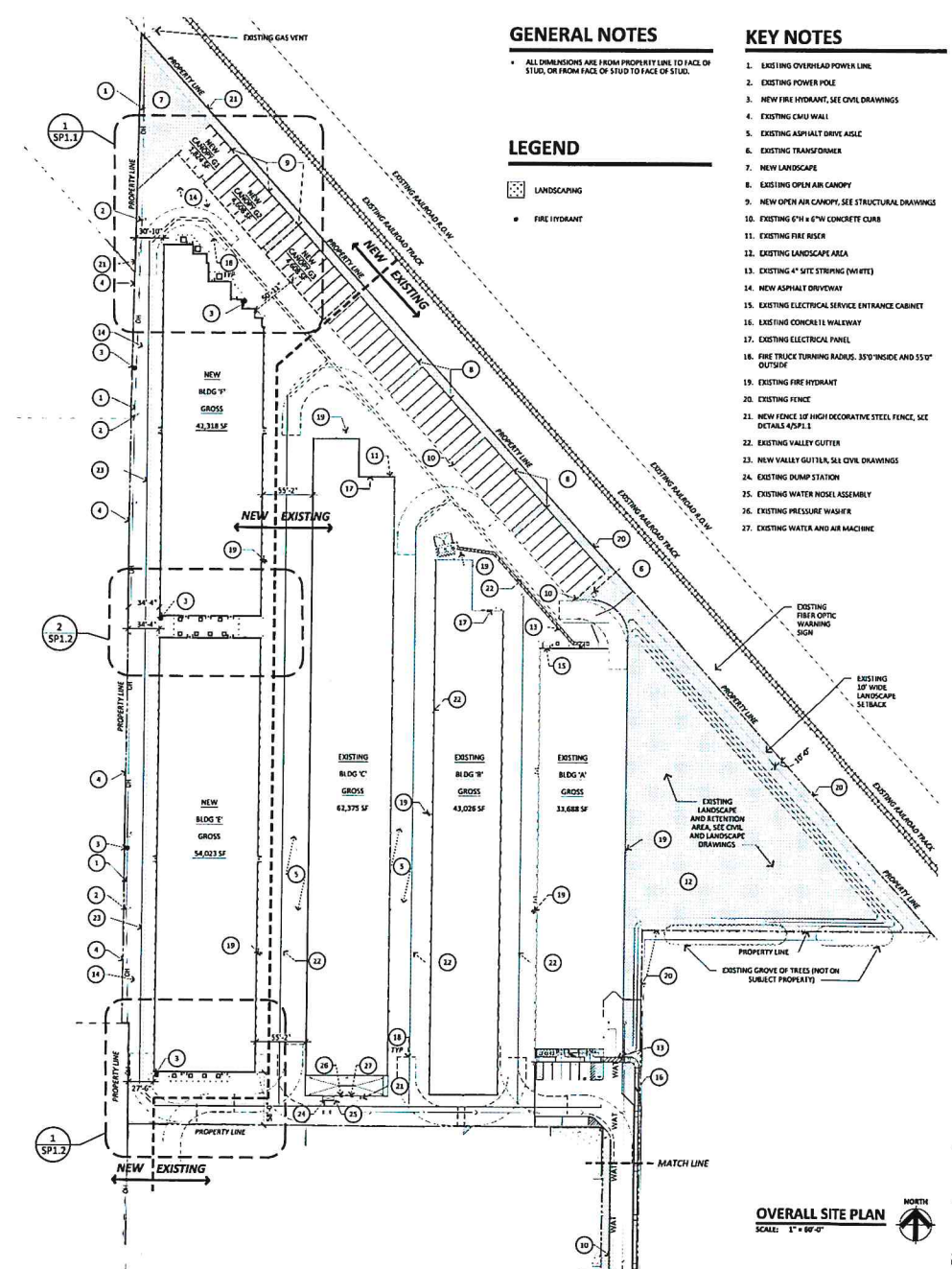
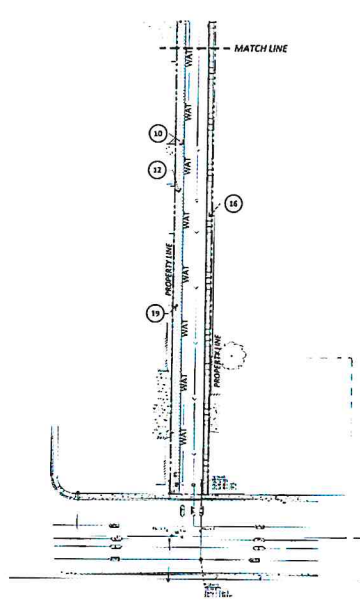
3 EXTERIOR ELEVATION - EAST
SCALE: 3/32" = 1'-0"



2 EXTERIOR ELEVATION - WEST
SCALE: 3/32" = 1'-0"



1 EXTERIOR ELEVATION - WEST
SCALE: 3/32" = 1'-0"



GENERAL NOTES

• ALL DIMENSIONS ARE FROM PROPERTY LINE TO FACE OF STUD, OR FROM FACE OF STUD TO FACE OF STUD.

LEGEND

- LANDSCAPING
- FIRE HYDRANT

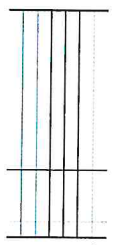
KEY NOTES

1. EXISTING OVERHEAD POWER LINE
2. EXISTING POWER POLE
3. NEW FIRE HYDRANT, SEE CIVIL DRAWINGS
4. EXISTING CMU WALL
5. EXISTING ASPHALT DRIVE AISLE
6. EXISTING TRANSFORMER
7. NEW LANDSCAPE
8. EXISTING OPEN AIR CANOPY
9. NEW OPEN AIR CANOPY, SEE STRUCTURAL DRAWINGS
10. EXISTING 6" H x 6" W CONCRETE CURB
11. EXISTING FIRE RISER
12. EXISTING LANDSCAPE AREA
13. EXISTING 4" SITE STRIPING (WHITE)
14. NEW ASPHALT DRIVEWAY
15. EXISTING ELECTRICAL SERVICE ENTRANCE CABINET
16. EXISTING CONCRETE WALKWAY
17. EXISTING ELECTRICAL PANEL
18. FIRE TRUCK TURNING RADIUS, 35'0" INSIDE AND 55'0" OUTSIDE
19. EXISTING FIRE HYDRANT
20. EXISTING FENCE
21. NEW FENCE 10' HIGH DECORATIVE STEEL FENCE, SEE DETAILS 400 P.1
22. EXISTING VALLEY GUTTER
23. NEW VALLEY GUTTER, SEE CIVIL DRAWINGS
24. EXISTING DUMP STATION
25. EXISTING WATER NOSE ASSEMBLY
26. EXISTING PRESSURE WASHER
27. EXISTING WATER AND AIR MACHINE



CONTRACT 2022-15
 DEVELOPMENTS, LLC, ALL
 RIGHTS RESERVED. THIS
 DRAWING IS AN INSTRUMENT
 OF SERVICE. IT IS THE
 PROPERTY OF ES DEVELOPMENTS, LLC, AND MAY
 BE REPRODUCED OR TRANSMITTED IN ANY FORM OR BY ANY MEANS, ELECTRONIC OR MECHANICAL, WITHOUT PERMISSION IN WRITING FROM ES DEVELOPMENTS, LLC.

PRELIMINARY
 NOT FOR
 CONSTRUCTION



PINK DOOR STORAGE
 PHASE 3
 1351 PUCKERTH ROAD TURLOCK, CA 95380
 PHASE 3 MINOR DISCRETIONARY PERMIT SUBMITTAL 2022 NOVEMBER 01

OVERALL SITE PLAN
 SCALE: 1" = 60'-0"



SP1
 PROJECT 22015